

Respiratory Virus Surveillance Report

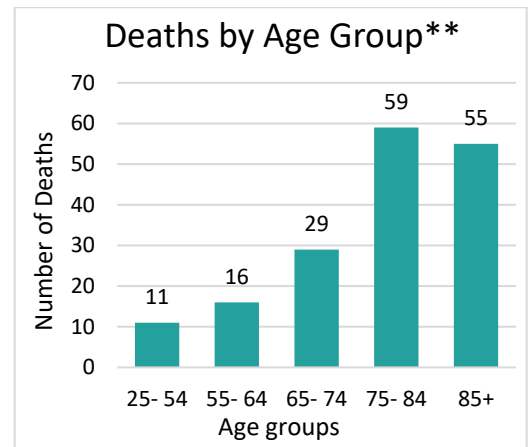
SURVEILLANCE REPORT: Mar 03 - Mar 16

Overview

- COVID-19 Cases and Percentage of positive tests have been stable.
- Influenza, RSV and COVID-19-related Emergency Department visits have been stable.
- Wastewater data shows COVID-19 detection has decreased in Modesto and Turlock. There has been no detection of RSV and Influenza in Modesto, while there has been a sporadic detection in Turlock over the past two weeks.

COVID-19 MONITORING

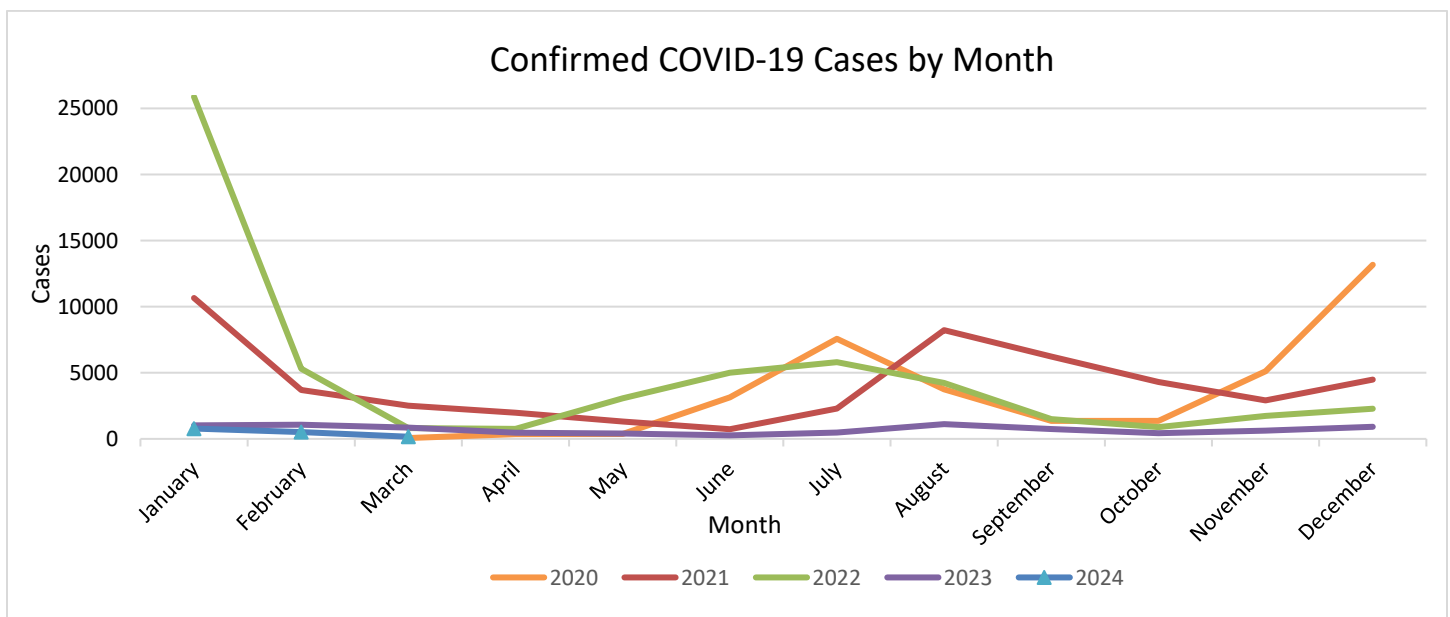
Age	Report Weeks			Fiscal Year: 22/23		
	Count	%	Rate	Count	%	Rate*
0-17	43	24.7%	0.24	3,137	14.7%	21.01
18-44	51	29.3%	0.27	8,414	39.5%	40.17
45-64	39	22.4%	0.37	5,456	25.6%	42.25
65+	41	23.6%	0.82	4,260	20.0%	57.28
Total	174	-	-	21,291	-	-
Deaths	0	-	-	170	-	-



*Rate per 1,000 population; Data Source: California Department of Finance

** Total Deaths from July 1, 2022, through June 30, 2023. Age groups with less than 10 deaths are not displayed.

This graph shows the daily number of COVID-19 confirmed cases reported among Stanislaus County residents by episode date.



Note: Due to delays in specimen processing, data may be incomplete.

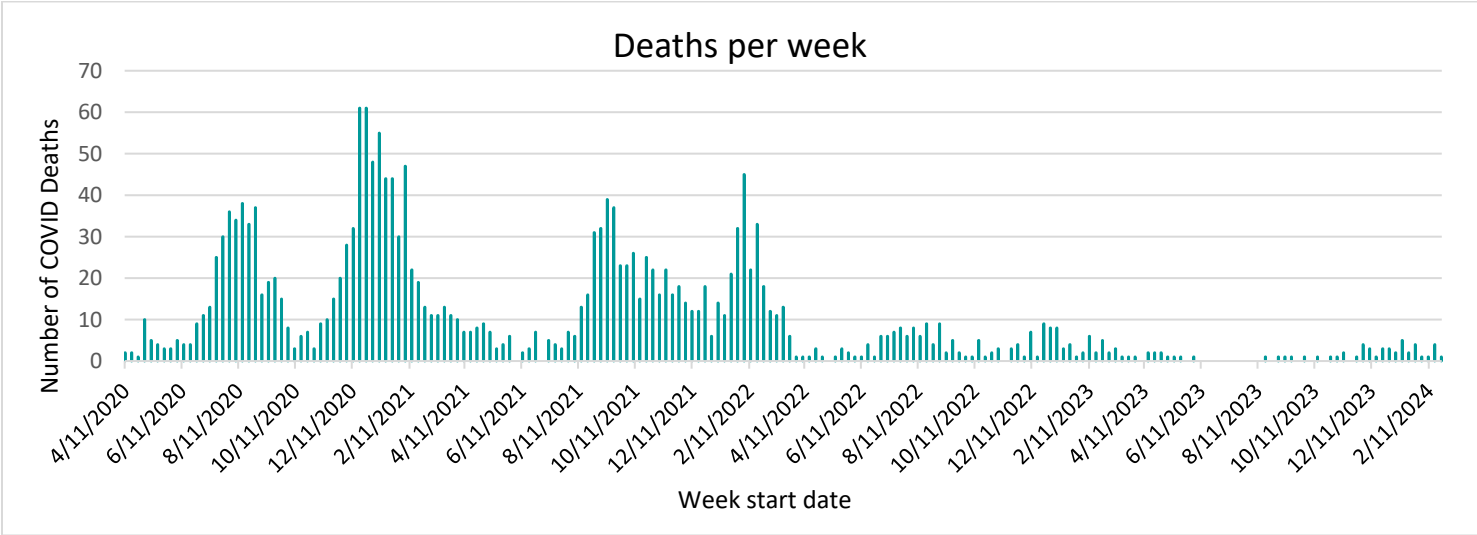
Reported COVID-19 cases and deaths on this page are those that have been confirmed by Stanislaus County Public Health.

Last Updated on March 21, 2024

Unrestricted

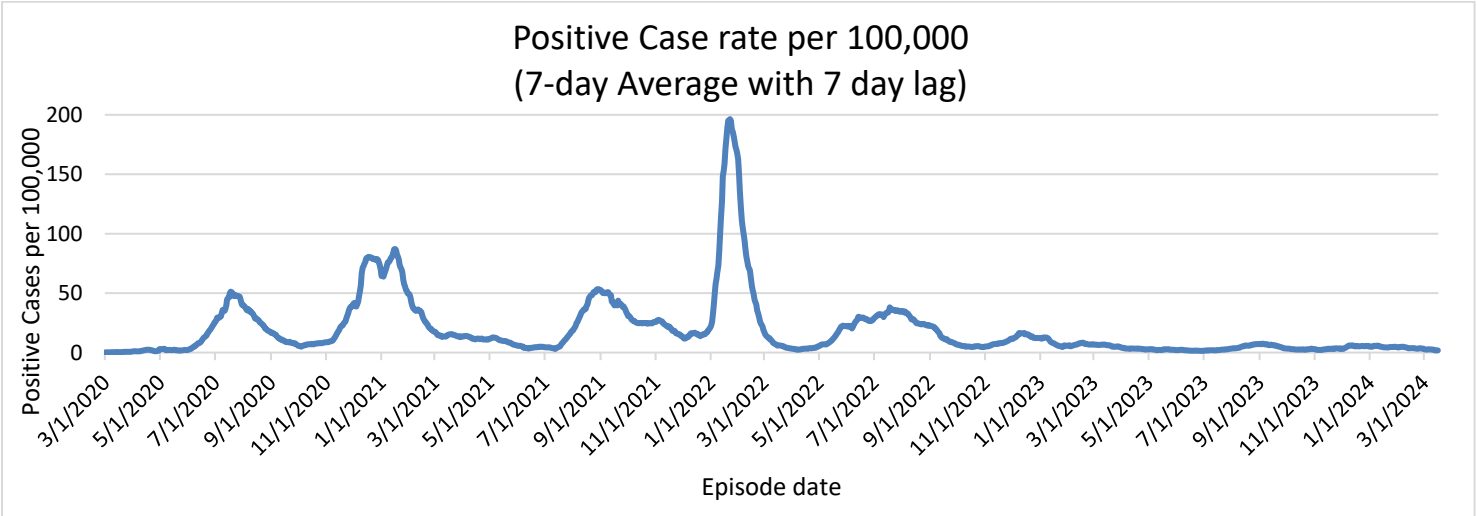
Page 1 of 6

The items contained are only the information known at the time of the entry and are subject to change at any time under any circumstance.

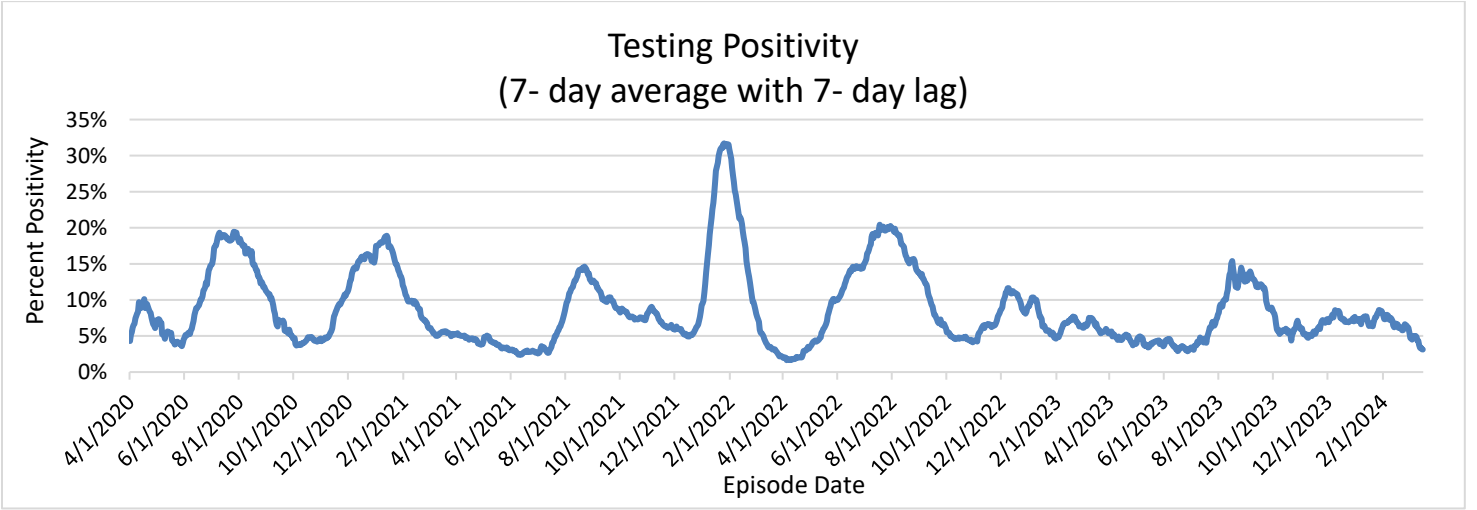


Note: Due to delays in death reporting and assessment, data may be incomplete. Reported COVID-19 cases and deaths on this page are those that have been confirmed by Stanislaus County Public Health.

The graph below shows the positive case rate (number of positive cases per 100,000 county population), 7-day average with 7-day lag, through the report week. This does not include the state adjustments and may vary from state measures.



The graph below shows testing positivity (percent of tests that are positive), 7-day average with 7-day lag, through the report weeks. This may vary from state measures.

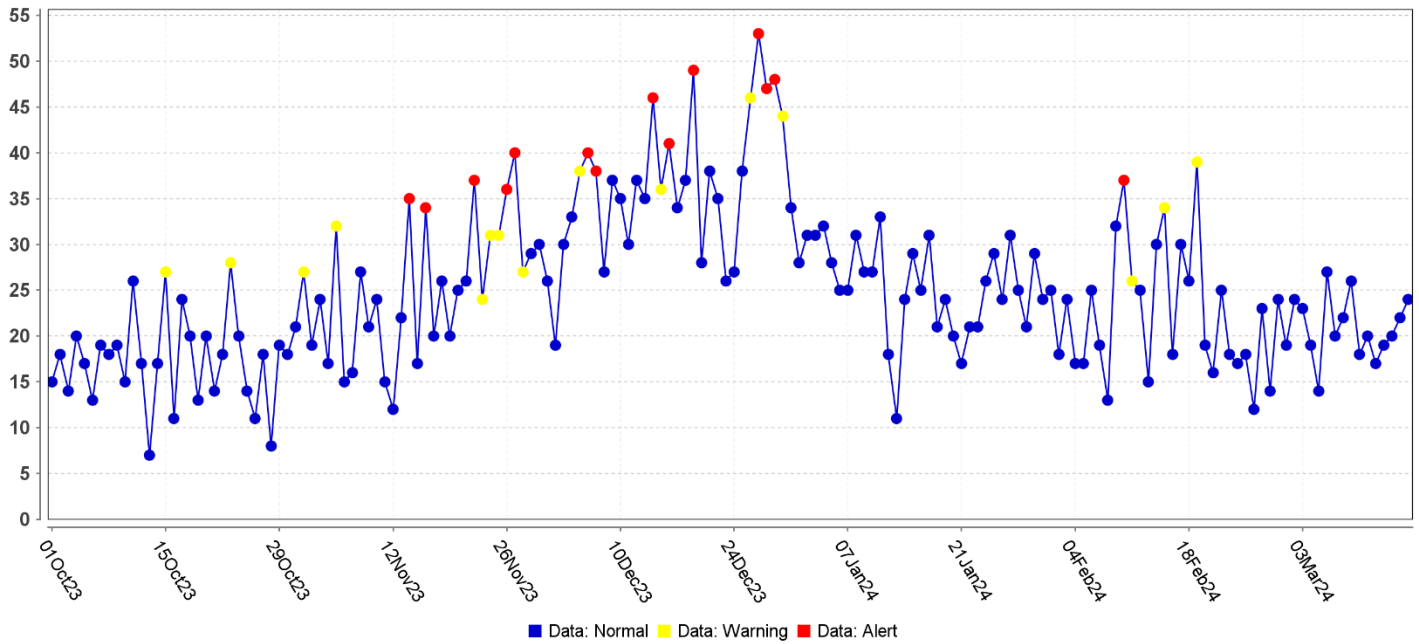


COMMUNITY MONITORING – EMERGENCY CASES

COVID-19 LIKE ILLNESS

This graph shows the number of emergency room visits for COVID-19-like illnesses for all Stanislaus County Hospitals.

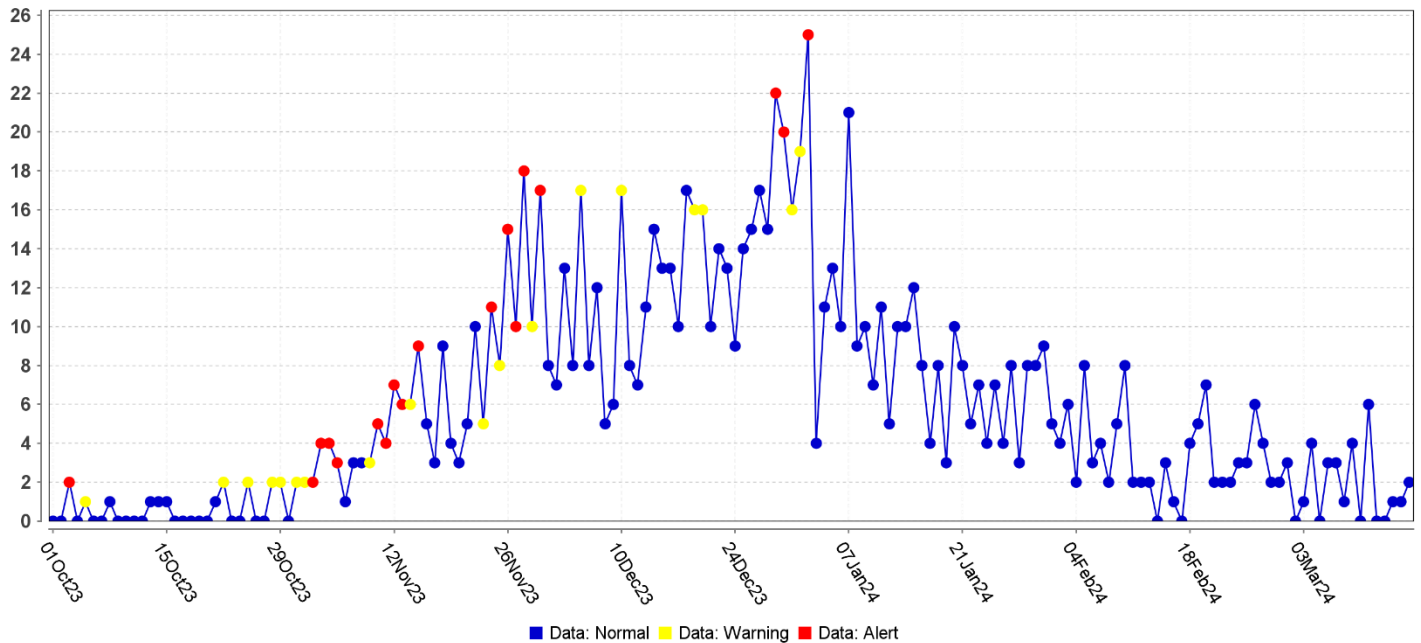
Daily Data Counts



RSV MONITORING

This graph shows the number of emergency room visits for RSV for all Stanislaus County Hospitals.

Daily Data Counts

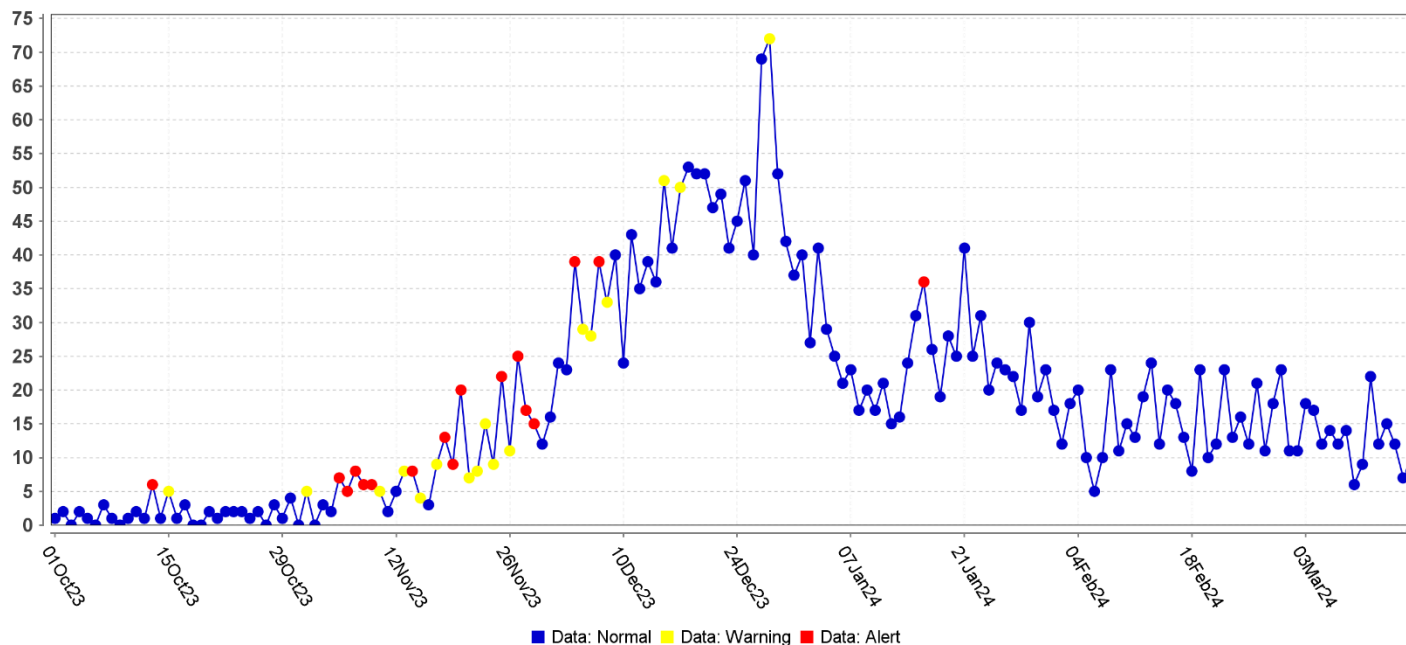


INFLUENZA MONITORING

Influenza-like illness

This graph shows the number of emergency room visits for Influenza-like illness complaints for all Stanislaus County Hospitals.

Daily Data Counts



SEVERE INFLUENZA

This chart shows the number of people who are in the intensive care unit and the deaths of children under 18 from influenza.

	Report Weeks	This Influenza Year
Intensive Care Unit	0	15
Death under 18 years old	0	0

The influenza year begins MMWR week 40, this year beginning on October 1.

Laboratory detections of respiratory viruses other than COVID-19

This chart looks at how many samples were tested for different kinds of influenza-like illness by the regional San Joaquin Public Health Laboratory (including Stanislaus County specimens), during the report weeks, and how many were positive, in order to monitor what is currently spreading in the area.

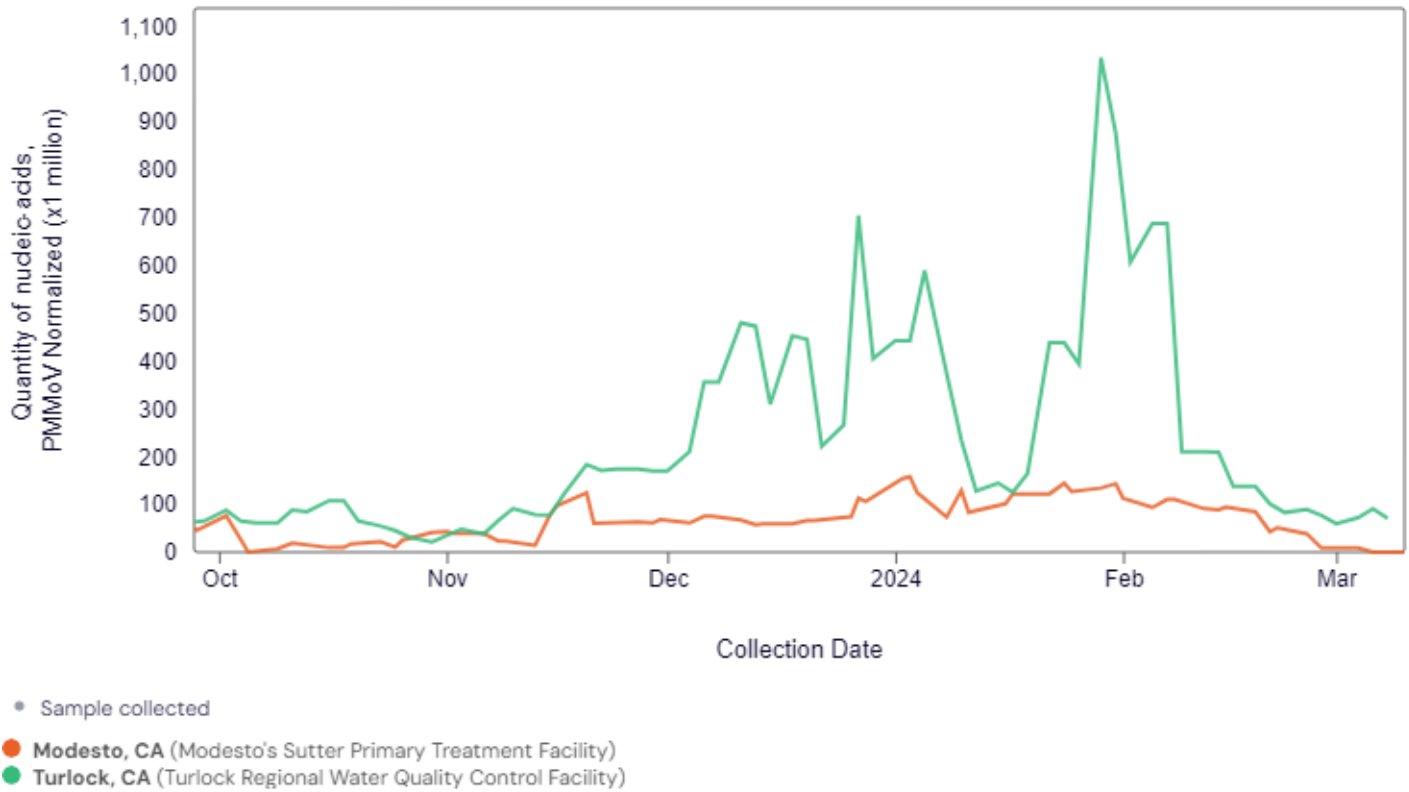
	Report Weeks		This Influenza Year	
	Samples Tested	Positive Tests	Samples Tested	Positive Tests
Influenza A	22	3	437	95
Influenza B	22	7	437	27
RSV	13	1	322	54
Parainfluenza	13	2	322	25
Adenovirus	13	0	322	20
Rhinovirus/Enterovirus	13	1	322	97

Human Metapneumovirus	13	0	322	10
Non-COVID-19 Coronaviruses	0	0	0	0

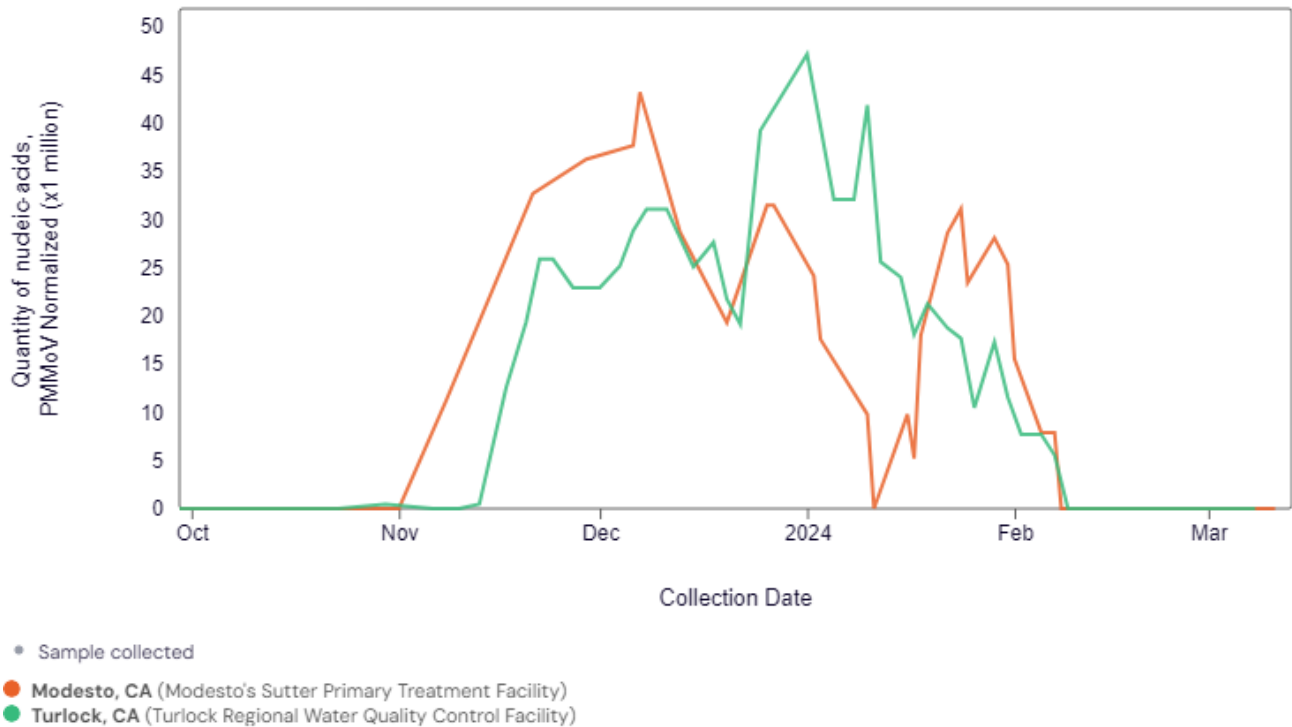
Table reference reflects the San Joaquin Public Health lab testing numbers.

COMMUNITY MONITORING – WASTEWATER SURVEILLANCE COVID-19

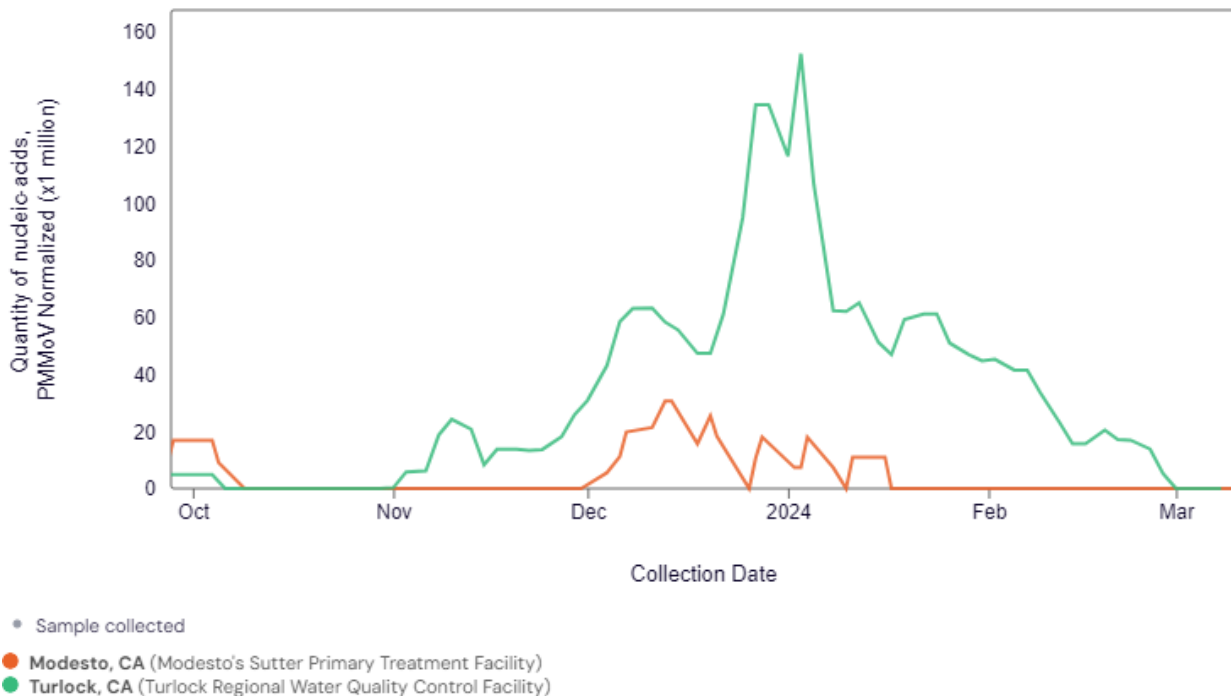
SARS-CoV-2, Stanislaus, CA



Influenza A, Stanislaus, CA



RSV, Stanislaus, CA



Source:

<https://data.wastewaterscan.org/tracker?charts=CjwQACABSABSBmZIZDk3ZlIGYWQ4NmE5WgNSU1ZyCjIwMjMtMDYtMDFyCjIwMjMtMTEtMDMKAQY0NmYyOTI%3D&selectedChartId=46f292>